

DOUBLE WIRE MESH FENCE

双丝网围栏



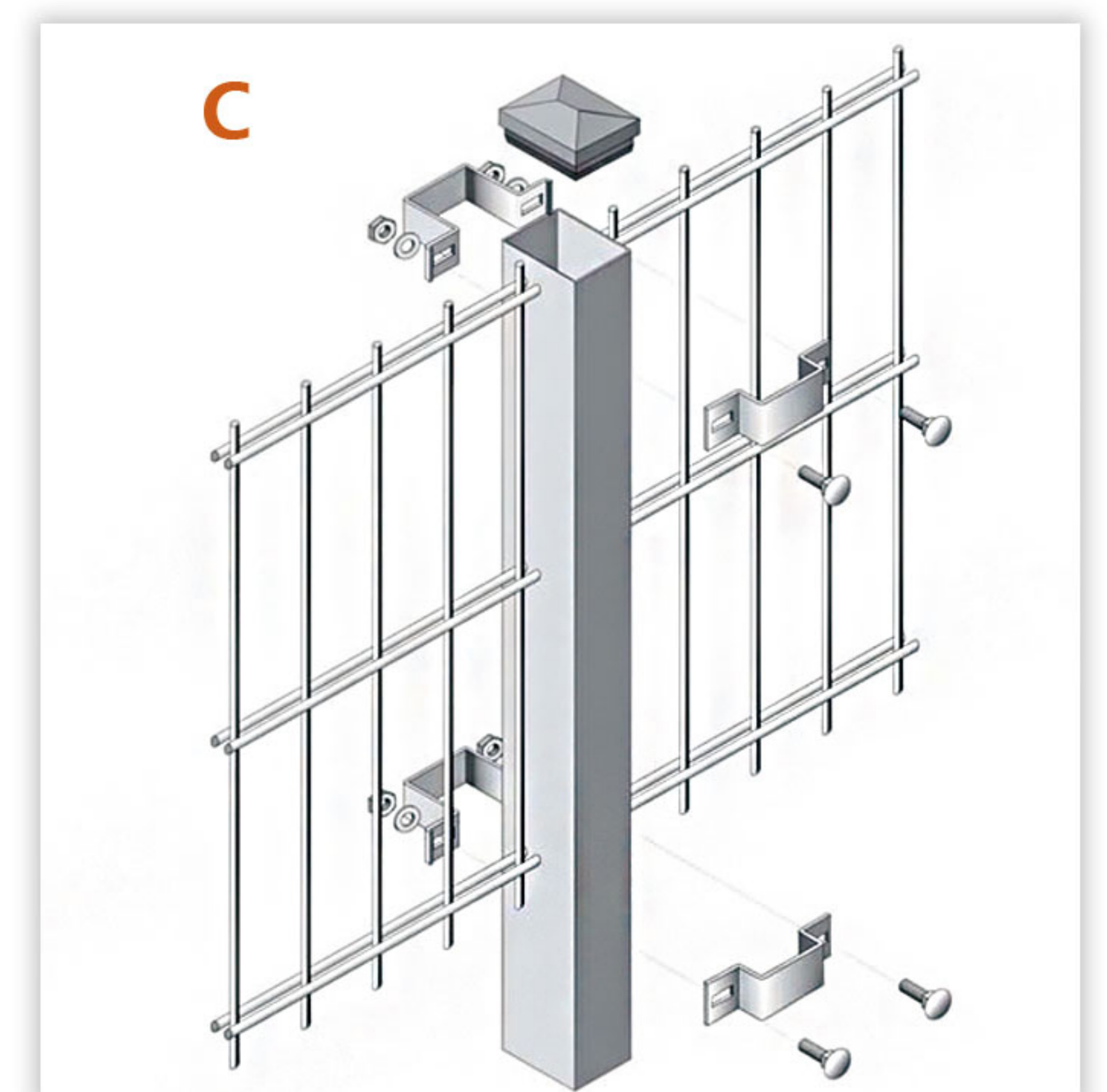
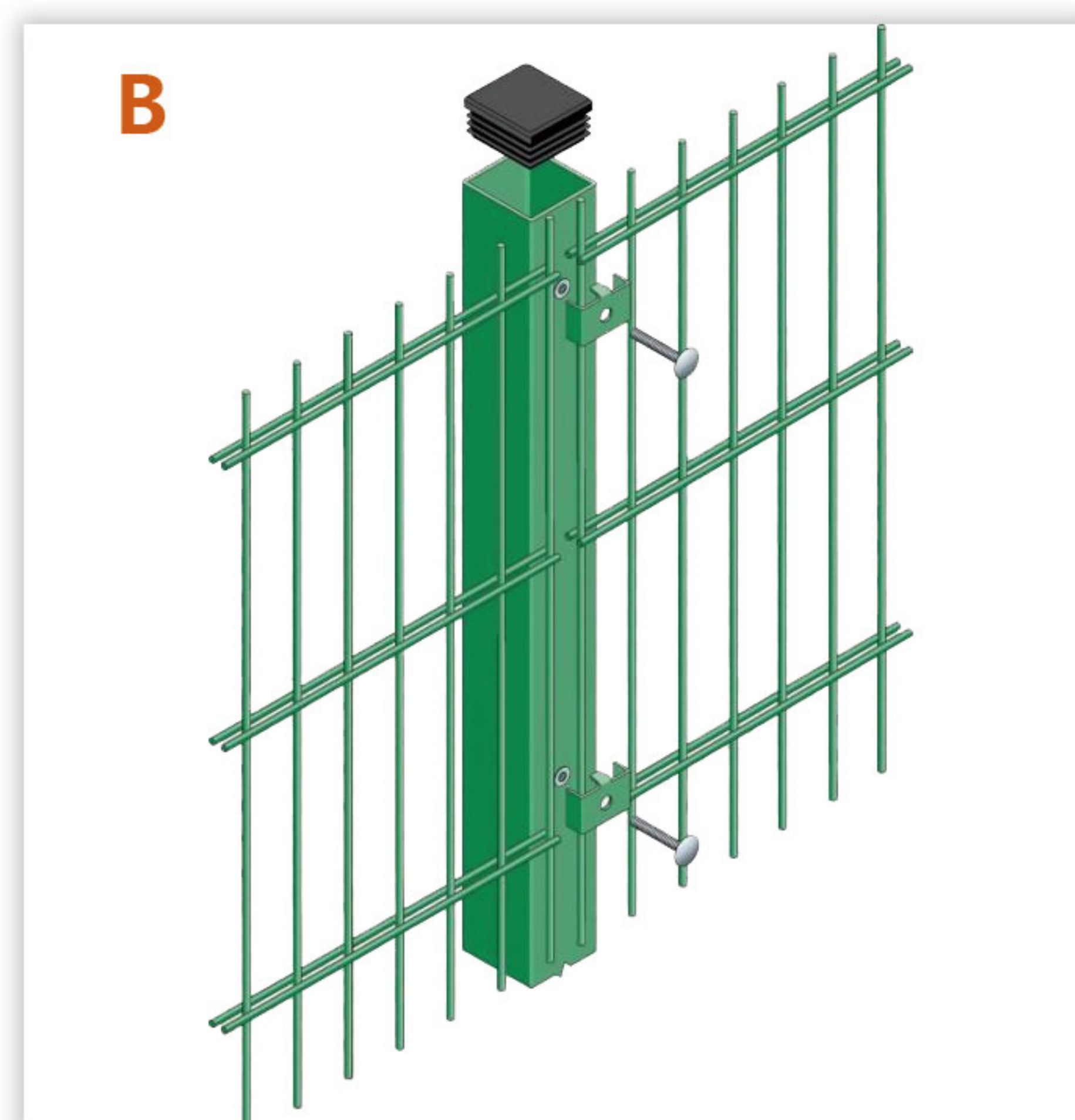
Double wire mesh fence is extremely strong fence system with a special structure, superior degree of resistance to impact damage making it an ideal choice for industrial and commercial areas, excellent rebound property perfect for sports grounds, such as basketball court, tennis court areas and park.

双丝网围栏是一种结构特殊且极其坚固的围栏系统，超越的抗撞击损坏能力使其成为商业和工业领域的理想选择。良好的反弹性能也适合运动场地，如篮球场，网球场和公园。



COMMON CONNECTION METHODS:

常见的连接方式：

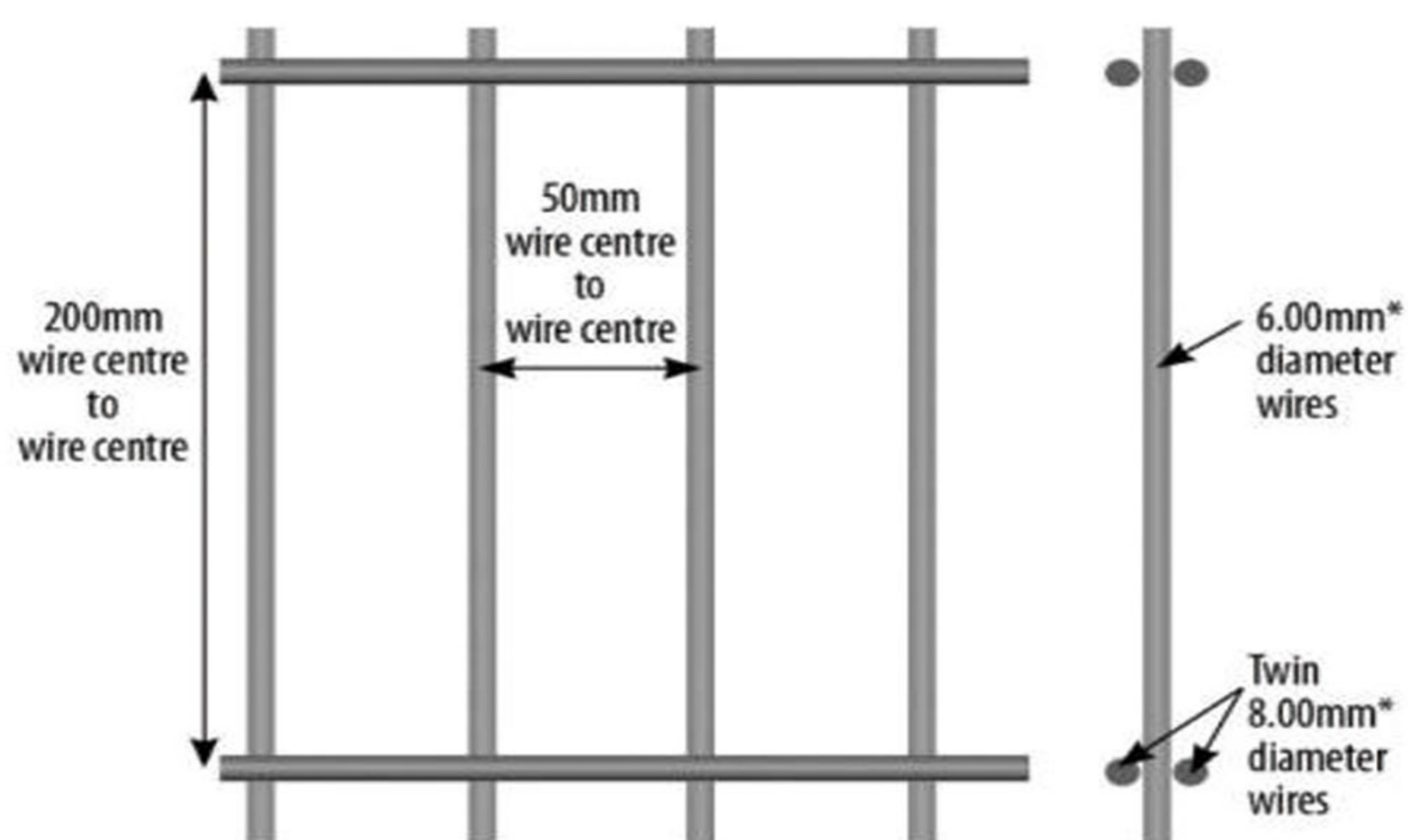


PRODUCT DESCRIPTION:**产品描述:**

H*W Panel(mm) 网片高x宽	Mesh Size(mm) 网孔	Wire Dia(mm) 丝径	Wire Dia(mm) 丝径	Wire Dia(mm) 丝径	Post of Height(mm) 立柱高度
630x2500	50x200	8x2 + 6	6x2 + 5	6x2 + 4	1100
830x2500	50x200	8x2 + 6	6x2 + 5	6x2 + 4	1300
1030x2500	50x200	8x2 + 6	6x2 + 5	6x2 + 4	1500
1230x2500	50x200	8x2 + 6	6x2 + 5	6x2 + 4	1700
1430x2500	50x200	8x2 + 6	6x2 + 5	6x2 + 4	1900
1630x2500	50x200	8x2 + 6	6x2 + 5	6x2 + 4	2100
1830x2500	50x200	8x2 + 6	6x2 + 5	6x2 + 4	2400
2030x2500	50x200	8x2 + 6	6x2 + 5	6x2 + 4	2600
2230x2500	50x200	8x2 + 6	6x2 + 5	6x2 + 4	2800
2430x2500	50x200	8x2 + 6	6x2 + 5	6x2 + 4	3000

Single vertical wire 6mm diameter is between twined horizontal wire 8mm diameter. Protruding wire 30mm vertically forms a barbed top.

单根6mm垂直线径在两个8mm水平线径之间，突出的30mm铁丝在顶部形成垂直的倒刺。





Rectangle post
矩形柱



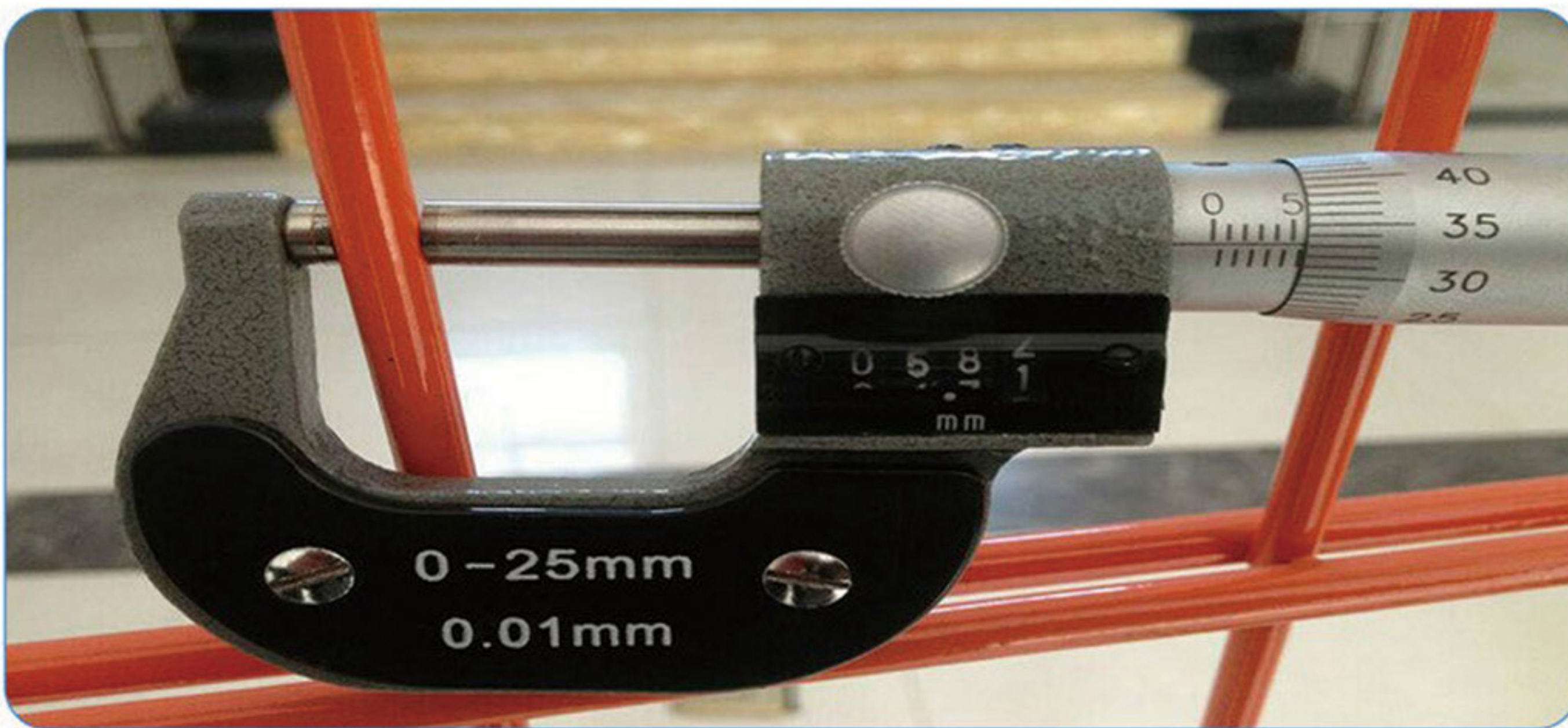
Square post
方形柱



Round post
圆形柱



Peach post
桃形柱

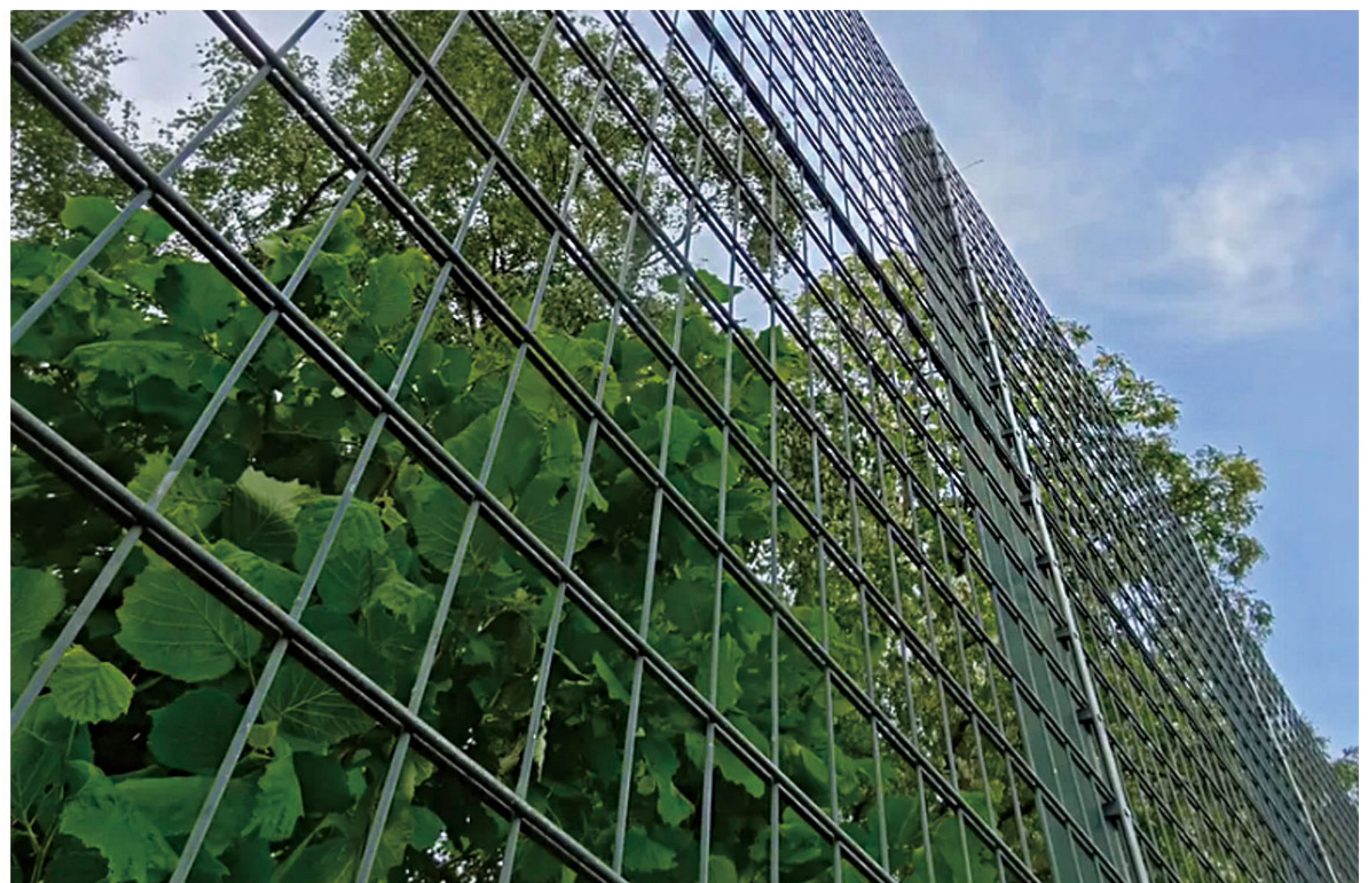


Finish:

- 1、 raw material + PVC coated
- 2、 galvanized material + powder coated

表面处理:

- 1、 原材料+PVC 涂层
- 2、 镀锌料+ 粉末涂层





Sports field fence
运动场围栏



Courtyard fence
庭院围栏



Park landscaping
公园围栏